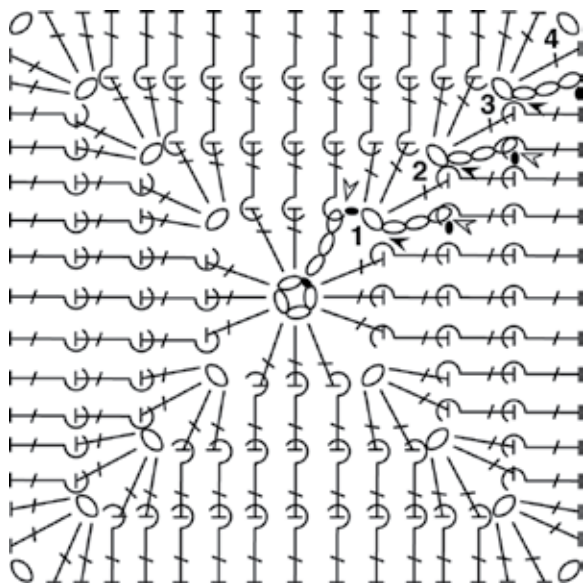


16: Raised Double Square



Raised Double Square

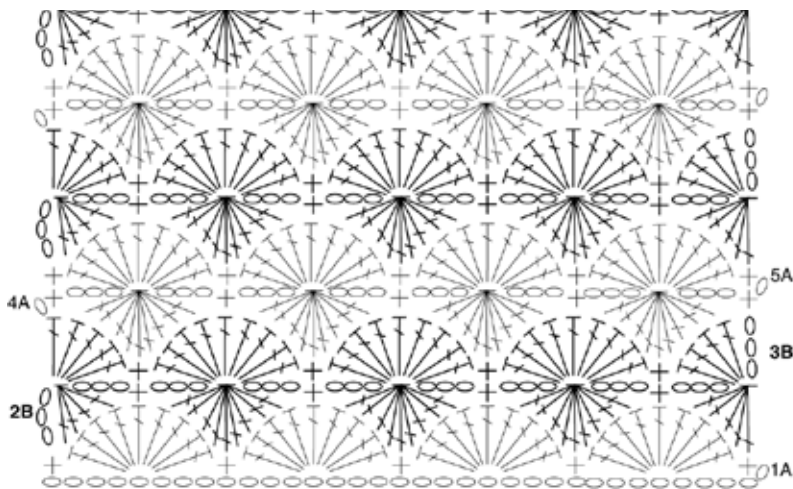
Ch 4, join into ring with ss.

Round 1: Ch 3, 2 dc into ring, (1 ch, 3 dc into ring) 3 times, ss into top of ch3 to join. Bind off - new color.

Round 2: 3 ch (1 dc, 1 ch, 2 dc) all into corner sp, *work 1 raised dc/back round each st to next corner 1 ch sp, ** (2 dc, 1 ch, 2 dc) into sp; rep from * all round ending last rep at **, ss into top of 3 ch to join. Bind off - new color.

Continue as Round 2 for another 1 or 2 rounds or until size required. Square can be varied by working raised dc/front on some rounds.

Roundels



Tips: Different patterns will emerge depending on how many colors you use and when you change them. Roundels can also be added one at a time to the edge of fabric when you are 'scrambling'.

Roundels

Multiple of: 8 sts + 1, add 1 for base ch, ie total here = 34 ch

Row 1 (right side): Skip 1 ch (does not count as st), always picking up 2 loops of each ch work 1 sc into next ch, *skip 3 ch, 9 dc into next ch, skip 3 ch, 1 sc into next ch; rep from * to end, turn. **Note:** It is very helpful to mark the chain for the next sc **before** you work the preceding 9 dc group

Row 2: 3 ch (count as first dc of next cl), dc4tog over next 4 dc, * 3 ch, 1 sc into next dc, 3 ch, dc9tog over next 9 sts; rep from * to last 6 sts, 3 ch, 1 sc into next dc, 3 ch, dc5tog over next 5 sts, turn.

Row 3: 3 ch (counts as 1 dc), 4 dc into st at base of 3 ch, *skip 3 ch, 1 sc into next sc, skip 2 ch, 9 dc under top 2 lps of next ch; rep from * to last 3 ch lp, skip 2 ch, 5 dc under top 2 lps of next ch, turn.

Row 4: 1 ch (does not count as st), 1 sc into st at base of 1 ch, * 3 ch, dc9tog over next 9 sts, 3 ch, 1 sc into next st; rep from * to end, turn.

Row 5: 1 ch (does not count as st), 1 sc into st at base of 1 ch, * skip 2 ch, 9 dc under top 2 lps of next ch, skip [cl and 3 ch], 1 sc into next sc; rep from * to end, turn.

Rep rows 2 - 5 for pattern and end after Row 10 or any Patt Row 2.

Abbreviations:

Ch - chain; cl - cluster, ie any 2 or more stitches which are joined together; sp - space; ss - slip stitch; sc - single crochet; dc - double crochet; st - stitch; yoh - yarn over hook; rep - repeat; tch - turning chain; dc4(5/9)tog - double

crochet 4(5/9) together, worked thus: *yoh, insert hook into center of next st, yoh, pull loop through, [yoh, pull through 2 loops] twice, rep from * 3(4/8) more times, yoh pull through all 5(6/10) loops on hook; dc/rb - double crochet

raised (round the post) at the back, thus: work double crochet normally except insert hook around stem of stitch, going in and out of fabric at back and from right to left (Lefthanders: from left to right).